



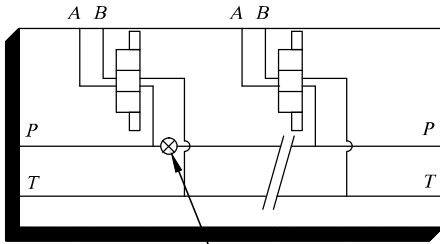
MULTI-STATION MANIFOLD CETOP 2

S2L

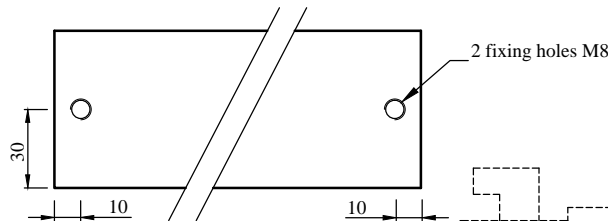
A12/1

SIDE EXIT

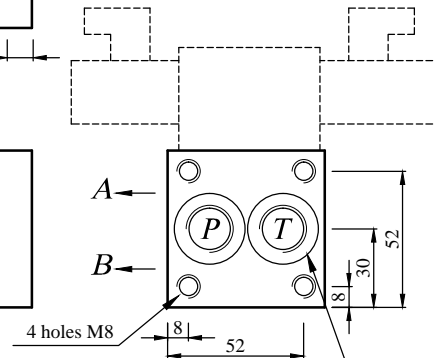
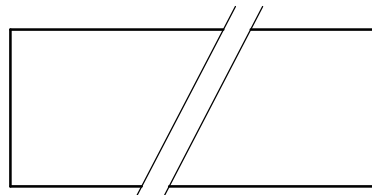
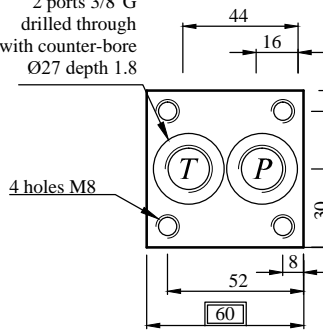
- Sorties latérales
- Seitlich
- Service pressure 300B.



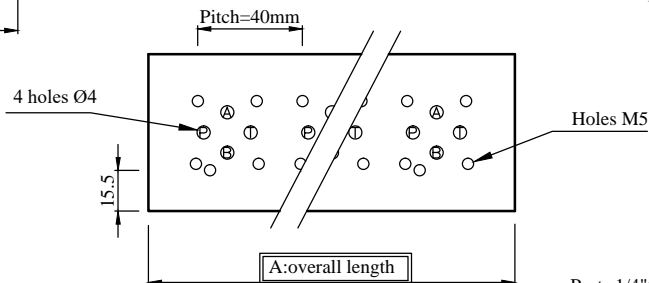
Tapped hole 1/4"G for possible plug
(plug out of supply)



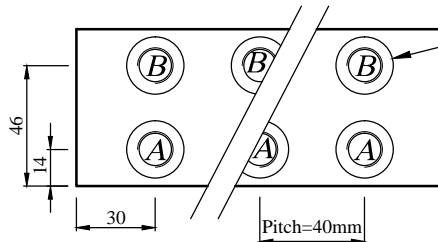
2 ports 3/8"G
drilled through
with counter-bore
Ø27 depth 1.8



2 ports 3/8"G
drilled through
with counter-bore
Ø27 depth 1.8



Ports 1/4"G
with counter-bore
Ø22 depth 1



DIMENSIONS

MODEL	A	weight (KG) ALU
S2L1GA	60	0.6
S2L2GA	100	0.9
S2L3GA	140	1.3
S2L4GA	180	1.6
S2L5GA	220	2
S2L6GA	260	2.4
S2L7GA	300	2.7
S2L8GA	340	3

MODEL CODE

